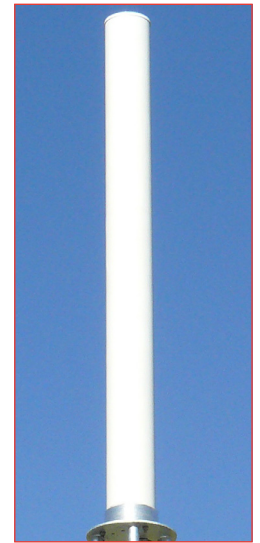


Band IV/V (UHF) Superturnstile Arrays 470-862MHz

Product Description

A new ultra-slim and lightweight superturnstile UHF broadcast antenna supports the entire US and European UHF bands (470 to 862 MHz). This antenna exhibits excellent pattern circularity and ripple characteristics. The low profile offers significant reduction in wind loading and weight, to provide broadcasters with enormous flexibility when considering installation on existing loaded towers.

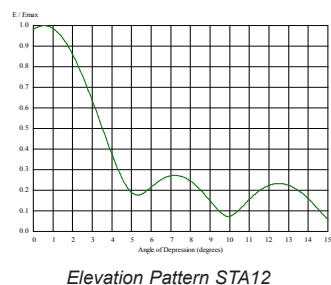
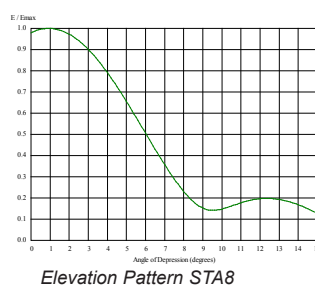
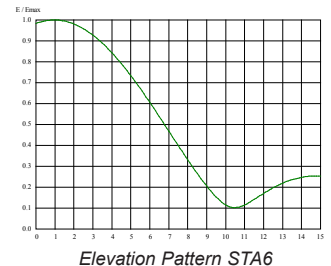
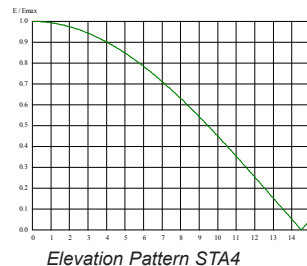
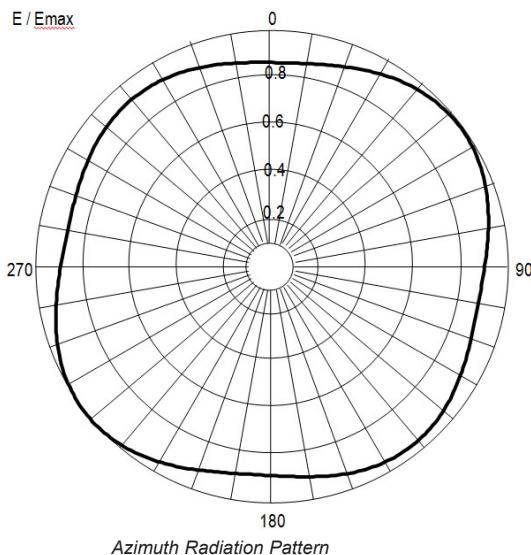


Features/Benefits

- Ideal low wind load solution
- Ideal for broadcast applications up to 5 kW
- Exhibits pattern ripple of better than ± 1.5 dB across the entire UHF band
- Low drag profile underpins the antenna's high wind speed rating and low wind load characteristics
- Low cost and cost-effective
- Single rod lightning protection, fully DC grounded.
- Purpose designed mounting bracket is available for LMP series antennas on request

Specifications	STA4-LMP	STA6-LMP	STA8-LMP	STA12-MP
Frequency Range, MHz	470-862			
Polarization	Horizontal			
Number of Channels	Multichannel			
Nominal Gain (Mid-band), dBd	7.5	8.9	10.1	11.8
Azimuth Radiation Pattern	Omnidirectional			
Return Loss, dB	>20	>20	>20	>26
Input Connector	1-5/8" EIA			
Input power @ 665MHz, kW	5			
Peak Voltage Rating, kV	4			
Impedance, ohms	50 unbalanced			
Weight (approx), kg	52	65	80	150
Radome Diameter, mm	269	269	269	323
Dimensions (Height or Length, incl lightning rod), cm	260	340	440	665
Effective Area (front, side, rear - full antenna), m ² Note	0.45	0.65	0.8	1.4
Wind survival rating (max), km/h (mph) to AS 1170.2: 2011	240 (150)	225 (140)	225 (140)	200 (124)
Wind Load @ 50 m/sec (front), kN to AS 1170.2: 2011	0.7	1.0	1.2	2.1
Pressurization Operational, kPa (psi)	NA	NA	NA	Optional
Pressurization Test, kPa (psi)	100 (15) 1-5/8" input			
Radome colour	Light grey RAL7035			
Material - Radome	Fibreglass			
Material - Support Pole / Mounting	Galv Steel			
Material - Radiators	Aluminium/Silver Plated Brass/Stainless Steel			
Operating Temperature	-20 to +60°C			
Note: Effective area is calculated based on Cd=0.6 for $bV_{des \theta} > 10$ m ² /s to AS1170.2:2011. Contact a qualified structural consultant to confirm this applies to your installation				

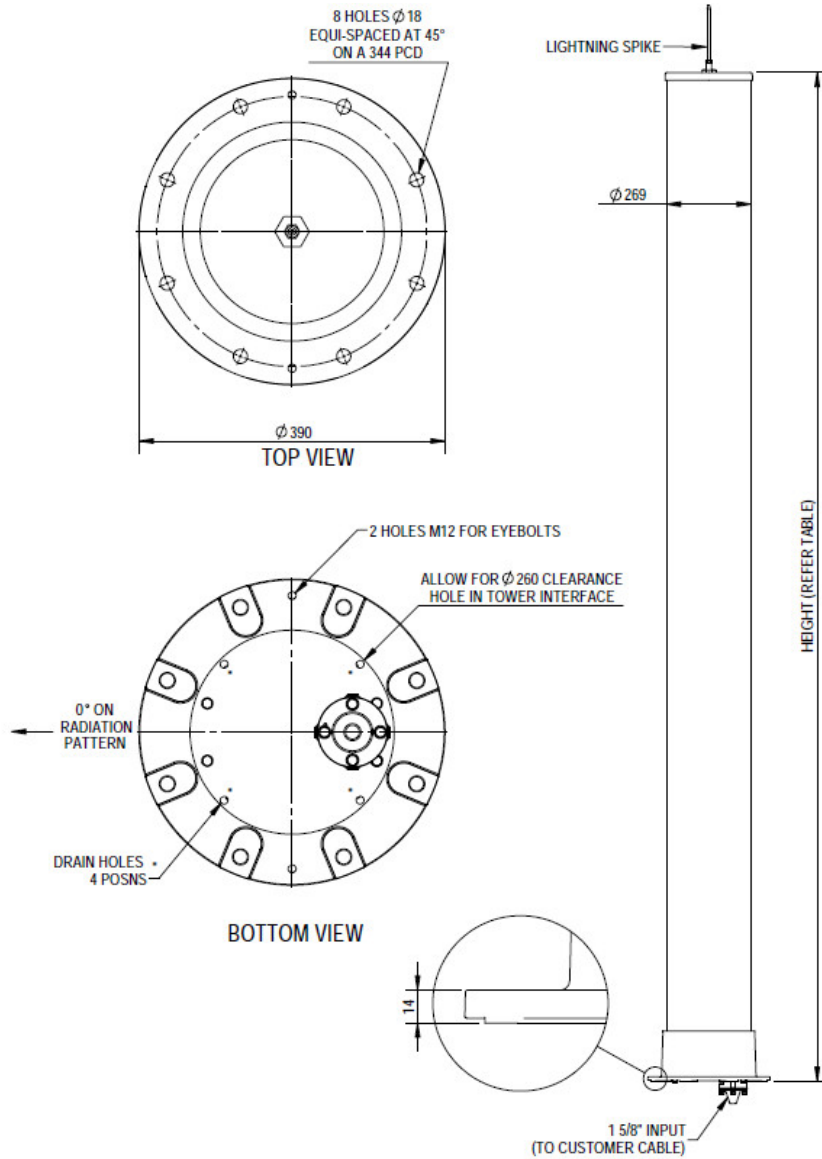
Patterns



All information contained in the present brochure is subject to confirmation at time of ordering

Band IV/V (UHF) Superturnstile Arrays 470-862MHz

Mounting Detail

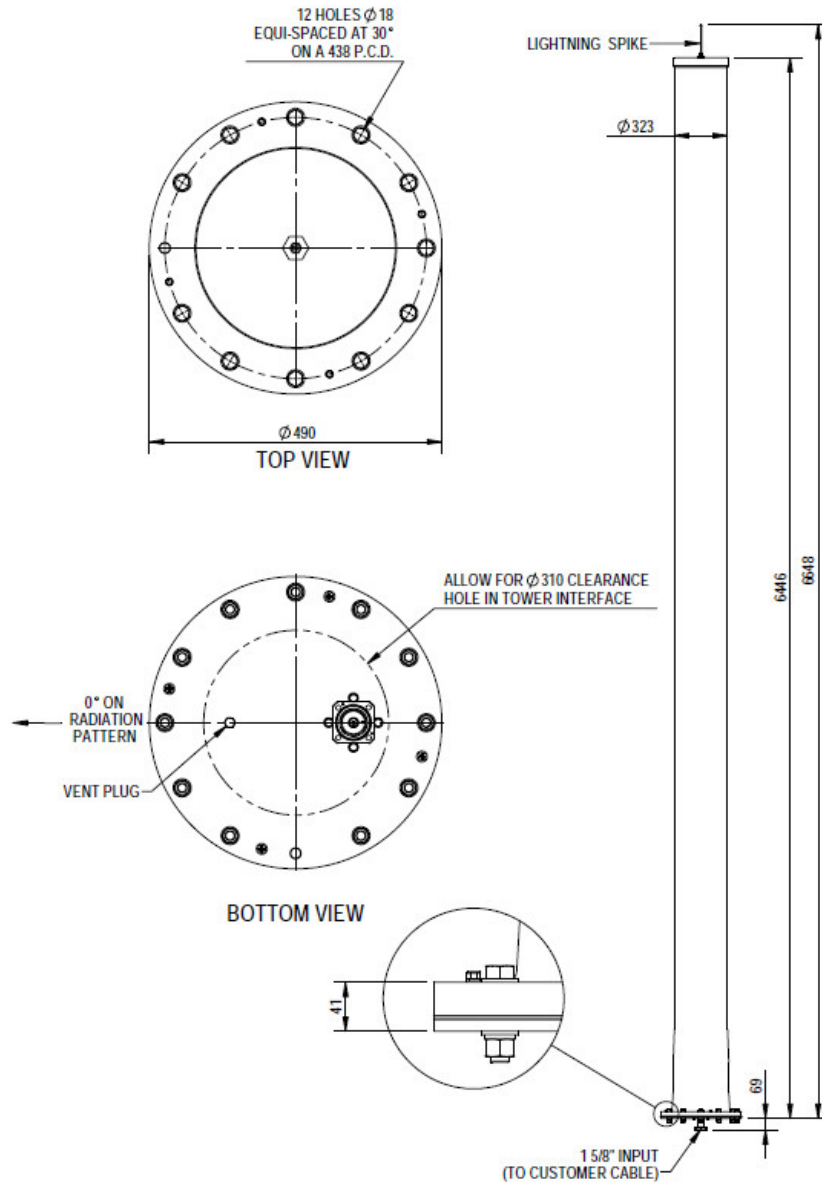


STA-LMP Series

All information contained in the present brochure is subject to confirmation at time of ordering

Band IV/V (UHF) Superturnstile Arrays 470-862MHz

Mounting Detail



STA12-MP Antenna

All information contained in the present brochure is subject to confirmation at time of ordering